

# DINNER

## MENU



## SALADS

### GREEK SALAD

75.00

Garden salad topped with feta chunks and olives.

### GRILLED CHICKEN SALAD

92.00

Succulent grilled chicken breast strips served on a garden salad and topped with mozzarella cheese.

## STARTERS

### PERI-PERI CHICKEN LIVERS

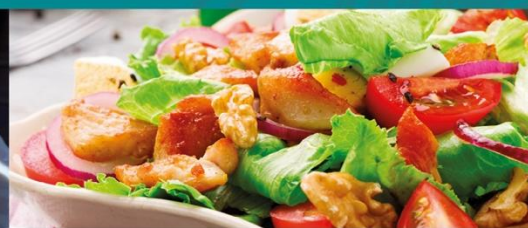
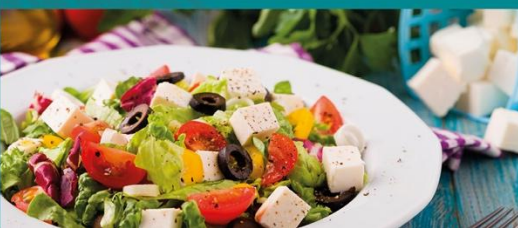
70.00

Creamy peri-peri chicken livers served with brown bread.

### CRUMBED MUSHROOMS

78.00

Crumbed mushrooms served with cheese or tartar sauce.



## FLAME GRILLS

<b>T-BONE</b> (350g)	210.00	<b>RUMP</b> (200g)	165.00
<b>RUMP</b> (500g)	275.00	<b>PORK CHOP</b> (2x200g)	185.00
<b>FILLET</b> (200g)	240.00	<b>SPARE RIBS</b> (400g)	185.00

## COMBO 'S

<b>AMANZI COMBO</b>	225.00
200g Pork chops and, 350g chicken wings and 200g spare ribs.	
<b>ISİYALA COMBO</b>	195.00
125g Boerewors, 350g chicken wings and 200g spare ribs.	
<b>RAMOSWE COMBO</b>	250.00
100g Chicken strips, 300g chicken wings, 200g spare ribs and cheese griller.	

## HOOKS & FEATHERS

<b>CHICKEN SCHNITZEL</b>	135.00
With cheese & mushroom sauce.	
<b>SCHNITZEL STACKER</b>	160.00
Chicken breast crumbed and stacked with ham and cheddar and topped with mushroom sauce.	
<b>HAKE &amp; CHIPS</b>	120.00
With a tartar sauce.	
<b>FULL HAKE &amp; CHIPS</b>	150.00
Two hake fillets with a tartar sauce.	

*All above are served with vegetables, and a choice of chips or salad.*



## DESSERTS

*All desserts served with a scoop of vanilla ice cream.*

### CHOCOLATE VELVET CAKE SLICE 62.00

Velvety moist and decadent chocolate cake layered with Smooth apricot compote and chocolate ganache, topped with fine chocolate shavings.

### STRAWBERRY CHEESECAKE 72.00

Strawberry cheesecake filled with strawberry pieces on a shortbread crumb base glazed with strawberry coulis.

### BOSTON BROWNIES 72.00

Boston style chocolate brownie made with tree nuts, loads of chocolate and cocoa. Then perfectly baked to a fudgy & gooey mouthfeel, topped with milk chocolate ganache. Best served warm.

## HOT BEVERAGES

Tea or Coffee	20.00
Hot Chocolate	30.00

## COLD BEVERAGES

Soda Can (200ml)	20.00
Soda Can (300ml)	22.00
Tizer (Apple / Red)	30.00
Sparkling/Still Water(500ml)	16.00
Cordials <i>(Passion Fruit / Lime or Kola Tonic)</i>	4.00

## SPECIAL PEDROS & COFFEE

Kahlua Coffee	40.00	Don Pedro	40.00
Amarula Coffee	40.00	- Double Up	55.00
- Double Up	55.00		

