



KZN FROG ROUTE: BACKGROUND INFORMATION DOCUMENT



Cherise Acker-Cooper and Dr Jeanne Tarrant from the Endangered Wildlife Trusts Threatened Amphibian Programme

Contact number: 084 444 3452 Email Address: cherisea@ewt.org.za

CONTENTS

- 1. **KZN FROG ROUTE** 2
- 2. **ADAMS RURAL BACKGROUND**..... 3
 - 2.1.1. ADAMS MISSION CATCHMENT OVERNIGHT HIKE (1.5 DAYS)..... 5
 - 2.1.2. ADAMS MISSION WETLAND AND CULTURAL TOUR 6
 - 2.1.3. ADAMS MISSION CULTURAL TOUR 7
 - 2.1.4. ADAMS MISSION WETLAND AND FROG TOUR 7
- 3. **WIDENHAM WETLAND OR EMPISINI NATURE RESERVE** 7
 - 3.1. WIDENHAM OR EMPISINI NATURE RESERVE TOUR PACKAGE 8
- 4. **NKOMBA NATURE RESERVE**..... 8
- 5. **MT MORELAND**..... 9
- 6. **ROUTE EDUCATIONAL MATERIAL** 10
- 7. **Eco-guides and pricing** 10

1. KZN FROG ROUTE

The KwaZulu-Natal (KZN) Frog Route has been developed to highlight some of the coastline's most important wetland systems and to create an appreciation for frogs in the region. It is focused on accommodating a variety of tourists, including environmental citizens who would like to work with conservationists in the collection of data; school groups who are interested in completing a scientific study; as well as members of the public who would like to experience an evening of frogging .

The route sites are based on locations of the Endangered Pickersgill's Reed Frog (Figure 1), *Hyperolius pickersgilli*, which is endemic to the KZN coastline and known only from a few sites along this stretch. The Pickersgill's Reed Frog is a small frog (just over 2 cm long fully grown) with variable colouration – males are usually brown with a dark-edged light dorsolateral band running from the snout to the hind quarters and females are normally uniformly bright green. The species requires permanent wetlands with very dense reed beds. This habitat type, known as Indian Ocean Coastal Belt Group 2, is itself listed as Critically Endangered and is poorly protected.



Figure 1: Male Pickersgill's Reed Frog (Photo credit: Nick Evans)

In total the Pickersgill's Reed Frog has been identified at about 30 sites along the KZN coastline. Six of these sites have been included in the KZN Frog Route based on their holistic ecological importance, access and diversity (Figure 2). These are (south to north):

- Nkomba Conservation Area (Ugu Municipality);
- Widenham Wetland (eThekweni Municipality);
- Empisini Nature Reserve (eThekweni Municipality);
- Adams Mission (eThekweni Municipality);
- Mount Moreland (eThekweni Municipality); and
- Umlalazi Nature Reserve (Mtunzini).

This document outlines tourist package options for the various sites on the south coast. These packages can be catered for depending on visitors' needs

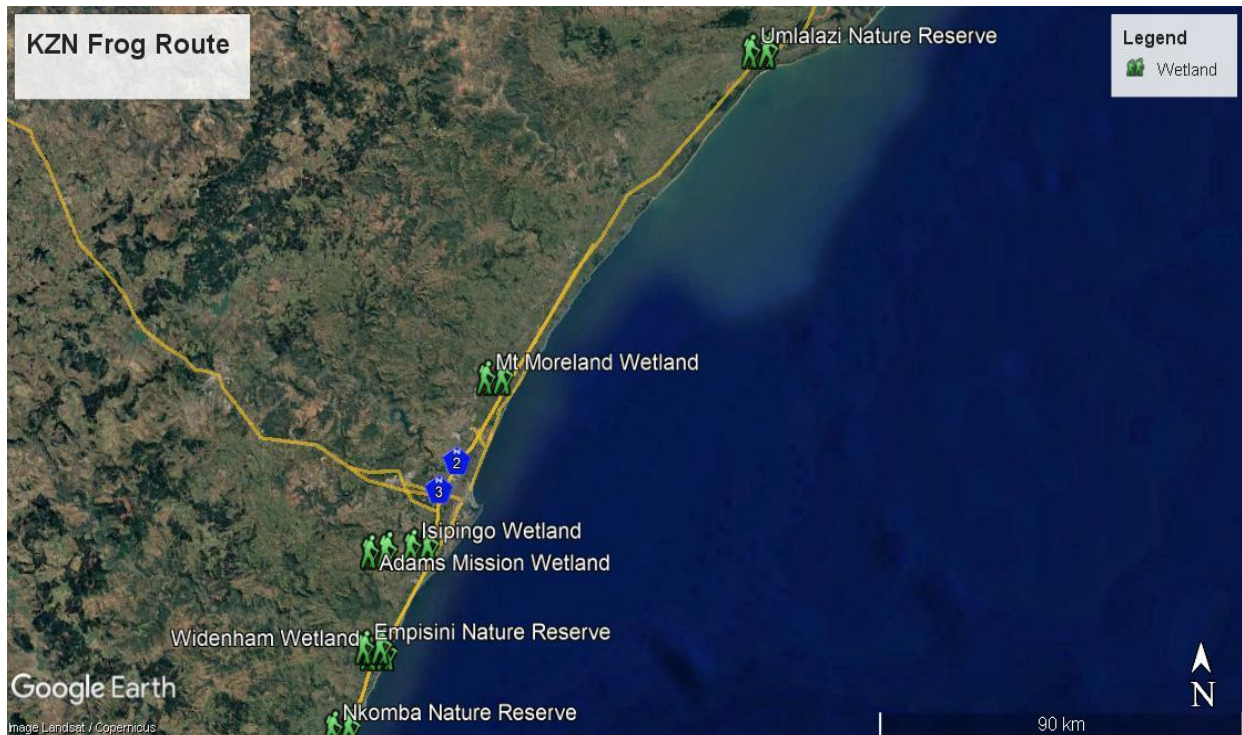


Figure 2: Map showing the KZN frog route sites.

2. ADAMS RURAL BACKGROUND

Adams Mission is a settlement west of Amanzimtoti and south of Durban, in the Umlazi district. Established in 1836, it was destroyed by Dingane, but rebuilt in 1839. The area is named after the American missionary, Dr. Newton Adams (1796-1841) who arrived in Natal in 1835 and who played a prominent role within the community, providing medical care as well as printing pamphlets in Zulu. In 1844 he was ordained a priest and he frequently preached to congregations of up to a 1 000 people. His school provided education to 100 pupils at a time and his medical skills were sought out by the British colonists, Boers and indigenous people alike! He became known amongst the Zulu's as 'the teacher with 3 coats' because of

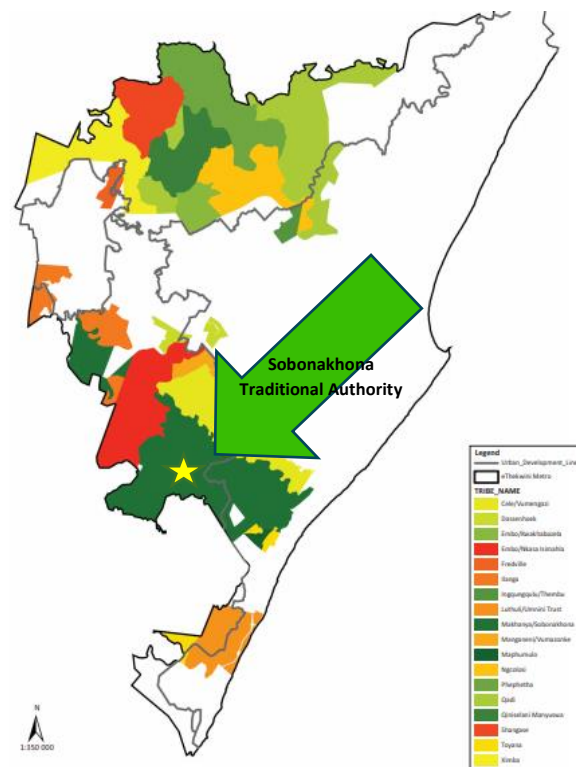


Figure 3: Map of eThekweni District Municipality showing traditional authorities located within the municipal area of which Sobonakhona Traditional Authority has been

his changing of clothes to suit his differing areas of work, (including a white medical coat).

He was appointed in 1847 as a mediator on the Natal Land Commission, set up to establish native reserves in the country. Adams died at the Adams Mission on 16 September 1847; his funeral was attended by many prominent residents and military officers. The Adams College was named in his honour at Amanzimtoti in 1853. The college's alumni include Presidents of Botswana and Uganda, several national ministers and leaders of the African National Congress. Some of the prominent people who are affiliated with Adams Mission College are:

| Name and Surname | Status |
|------------------------------------|---|
| Prince Mangosuthu Buthelezi | Prime Minister and political leader |
| Dr. Nkosazana Dlamini-Zuma | South African minister |
| Herbert Isaac Ernest Dhlomo | Writer and poet |
| John Dube | 1 st ANC president and founder member |
| Enoch Dumbutshena | First Zimbabwean Chief Justice |
| Pixley ka Isaka Seme | ANC Founder |
| Sir Seretse Khama | President of Botswana |
| Ellen Kuzwayo | President of the ANC Youth League |
| Judge Pius Langa | South African Chief Justice |
| Anton Lembede | 1 st President of the ANC Youth League |
| Albert Lutuli | Leader of the ANC and Nobel Laureate |
| Epainette Mbeki | Mother of President Thabo Mbeki |
| Zephania Mothopeng | President of the Pan-Africanist Congress |
| Joshua Nkomo | Vice-President of Zimbabwe |
| Milton Obote | President of Uganda |

Today the area consists of ~7000 households with over 31000 people which is governed by the Sobonakhona Traditional Authority lead by Inkhozi Makhanya within eThekweni District Municipality (Figure 3).



Figure 4: Kloof Frog (Photo credit: Nick Evans)

Environmentally, Adams Mission is home to 503ha of some of the most intact and pristine coastal wetland that remains in the municipal area, spanning across three different catchments, namely:

- Amanzimtoti;
- Lovu; and
- Golokodo.

These catchments are made up of threatened habitats and species of concern, including:

| Type | Description | Status |
|---------|--|-----------------------|
| Habitat | Indian Ocean Coastal Belt Wetland | Critically Endangered |
| Habitat | Indian Ocean Coastal Belt Grassland | Critically Endangered |
| Habitat | <i>Voacanga thouarsii</i> Swamp Forest | Critically Endangered |
| Species | <i>Hyperolius pickersgilli</i> (Pickersgill's Reed Frog) | Endangered |
| Species | <i>Natalobatrachus bonebergi</i> (Kloof Frog) (Figure 4) | Endangered |

2.1. ADAMS RURAL ECO-TOURISM PACKAGES

2.1.1. ADAMS MISSION CATCHMENT OVERNIGHT HIKE (1.5 DAYS)

1.5 day package which includes a guided 12km hike across three catchments namely the Lovu, Golokodo and Amanzimtoti.

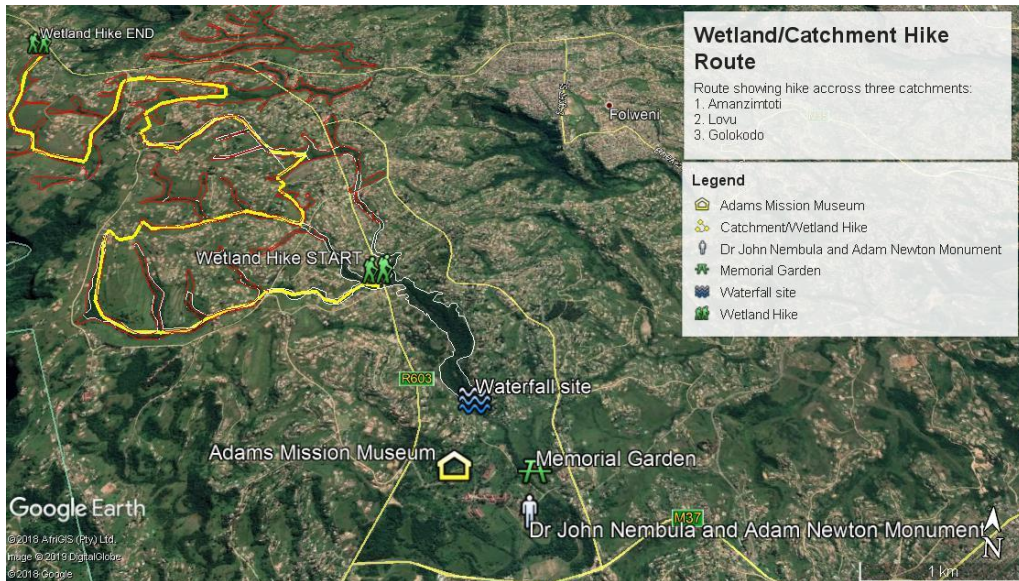
DAY 1

- Distance: 12km hike
- Time: 10h00 – 16h00/17h00
- Activities include:
 - ✓ Biodiversity interests – birding and botanical
 - ✓ Kloof Frog Monitoring
 - ✓ Cultural: traditional medicines, land use, etc.
 - ✓ Picnic lunch
- Cultural home stay (including dinner and breakfast)

DAY 2

- 08h00: Homestay breakfast
- 09h00: Depart for cultural tour
- 09h15: Arrive at cultural site
- 09h30: Cultural tour (~1.5 hours) which includes:
 - ✓ Waterfall
 - ✓ Monuments

- ✓ Memorial gardens and snack
- ✓ Museum (once completed)

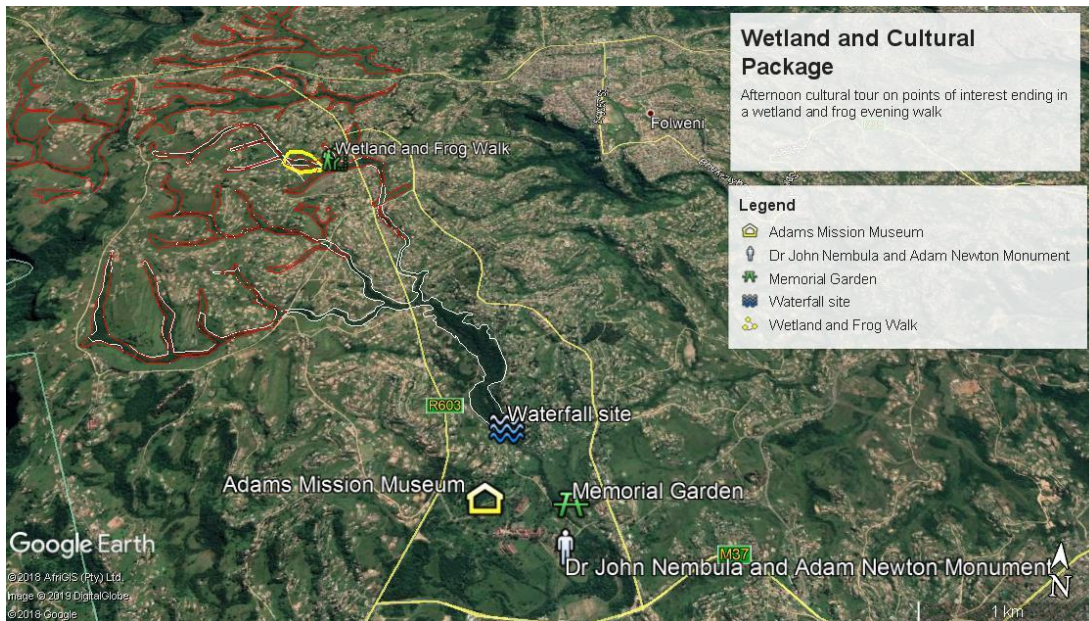


- 11h00 Depart

2.1.2. ADAMS MISSION WETLAND AND CULTURAL TOUR

Tour of cultural sites and wetland ecology tour and which includes a frogging excursion. This tour is broken down as follows:

- 15h30 Arrive at cultural site
 - ✓ Monuments
 - ✓ Waterfall
 - ✓ Museum (once completed)
- 16h30 Depart for wetland tour
- 16h45 Arrive at wetland site
 - ✓ Wetland trail
 - ✓ Wetland ecology and biodiversity tour
- 17h30 Sundowners and snacks
- 18h00 Frogging
 - ✓ Wetland exploration to find and identify frogs in and around the wetland
- 20h00 Depart



2.1.3. ADAMS MISSION CULTURAL TOUR

A ~1.5 hour tour of the cultural interest sites which include:

- ✓ Waterfall
- ✓ Monuments
- ✓ Memorial gardens and snack
- ✓ Museum (once completed)

2.1.4. ADAMS MISSION WETLAND AND FROG TOUR

A tour of the wetland to build knowledge of wetlands and their biodiversity.

- 17h00 Arrive at wetland site
 - ✓ Wetland trail
 - ✓ Wetland ecology and biodiversity tour
- 18h00 Sundowners and snacks
- 18h30 Frogging
 - ✓ Wetland exploration to find and identify frogs in and around the wetland
- 19h30 Depart

3. WIDENHAM WETLAND OR EMPISINI NATURE RESERVE

Widenham is located between the Mkhomazi and Mahlongwa rivers. This little suburb of Umkomaas is a holiday haven for many tourists to KZN's south coast with easy access to the beach and one of the top diving sites in South Africa, Aliwal Shoal, located within a Marine Protected Area. The area is also home to Empisini Nature Reserve and a small ~4ha wetland

at Widenham, both of which include Critically Endangered Indian Ocean Coastal Belt habitat and host the Endangered Pickersgill’s Reed Frog. These natural resources create an ideal tourism opportunity which allows for a dive in the morning, whale-watching and sundowners in the evening spending time in Critically Endangered habitat while trying to find the Endangered Pickersgill’s Reed Frog.

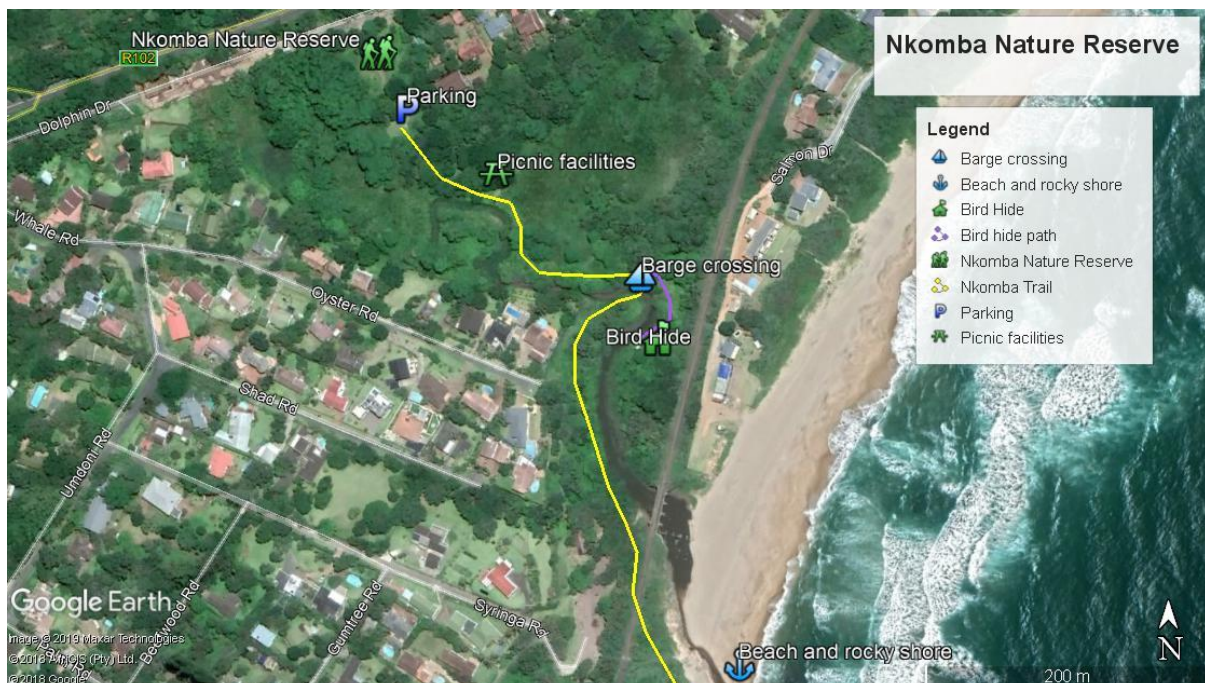
3.1. WIDENHAM OR EMPISINI NATURE RESERVE TOUR PACKAGE

A ~1.5 hour tour of the Widenham wetland or Empisini Nature Reserve. The package includes:

- 18h00: Sun downers and snacks at either wetland
- 18h30: – 19h30 Wetland exploration to find and identify frogs in and around the wetland.
- 20:00: Depart

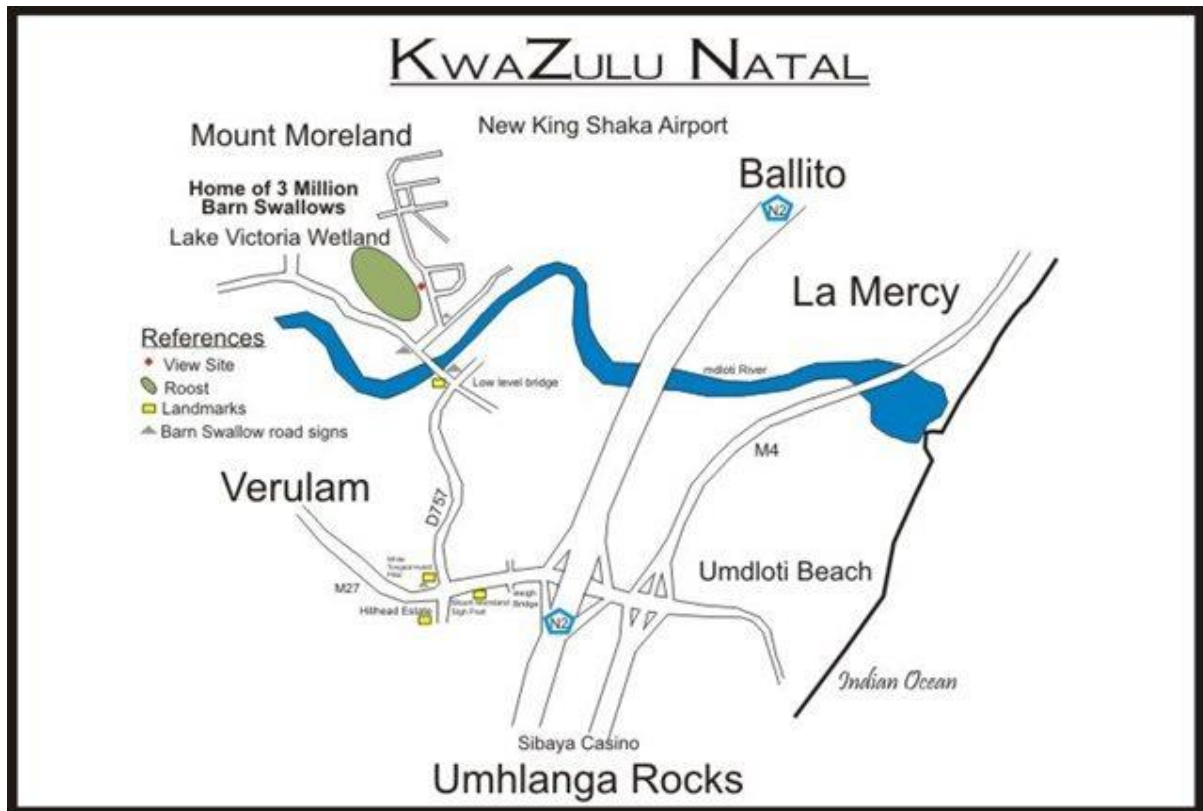
4. NKOMBA NATURE RESERVE

Nkomba Nature Reserve is located in Pennington along the Makamati stream. It is the legacy of Anne and John Jerman’s efforts who restored the area from what was a dumping site to an area of conservation significance. The wetland is home to the Endangered Pickersgill’s Reed frog as well as a variety of birds. It provides a variety of facilities including picnic sites, walkways, a bird hide and a barge to gain access to Nkomba beach and rock pools. The walk spans about a 1.5km round trip visiting the wetland, coastal forest and beach ecosystems.



5. MOUNT MORELAND

Mount Moreland is a small community found inland from Umdloti in eThekweni municipality, close to King Shaka International Airport. The area is renowned as an important roosting site at the Lake Victoria wetland for the European barn swallow which roost in these extensive reedbeds between October and April. It is also home to the Endangered Pickersgill's Reed Frog and a multitude of other frog and bird species.



Its proximity to Umdloti Beach and the Umdloti River provides tourists with activities for a whole day including: birding, canoeing, snorkeling, and evening frogging.

5.1. UMDLOTI AND MOUNT MORELAND TOUR PACKAGE

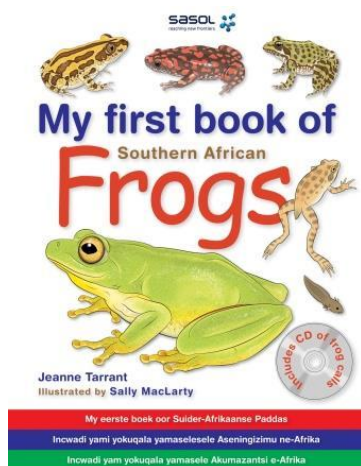
The package includes activities for a whole day:

- 10h00 Beach and snorkeling
- 13h00 Lunch
- 14h00 Canoe trip along the Umdloti River
- 17h00 Sundowners at Mount Moreland
- 18h00 Frog exploration at Mount Moreland wetlands.

6. ROUTE EDUCATIONAL MATERIAL

The KZN Frog Route have a number of resources namely:

- Frogs of Durban poster
- Frogs of South Africa Guide
- Frog app.



7. Eco-guides and pricing

There are a number of guides available for frog tours, namely:

| Guide name and surname | Site |
|------------------------|---------------|
| Nonkhululekho Nzama | Adams Mission |
| Njabulo Gcabashe | Adams Mission |
| Arlene Mkhize | Adams Mission |
| Ntutuko Chili | Adams Mission |
| Dr Jeanne Tarrant | All |
| Nick Evans | All |

| | |
|----------------------|-----|
| Cherise Acker | All |
|----------------------|-----|

The pricing structure is as follows for the guide's time only:

| Time frame | Cost |
|-------------------|-------------|
| 1 hour | R100.00 |
| ½ day tour | R400.00 |
| 1 Day | R800.00 |